

Adair & Neely

Funeral Directors



Pricing Information

November 2019

Our Funeral Choices

We commit to providing you with a personal and professional service. We'll help you plan and deliver all the elements of the funeral, to make sure it is a fitting farewell to your loved one.

A typical funeral will include four elements; our professional service fees, bringing your loved one into our care, the ceremonial vehicle and team for the day of the funeral, and a coffin. The other elements and costs of a funeral are the disbursements which are payments made to third parties on your behalf. These may include, for example, crematorium or cemetery fees, minister or celebrant fees, doctors' fees for cremation and any other additional expenses or services. We will detail these costs on our estimate.

Professional Services

We'll meet with you and your family, at our premises, where you will receive personal attention from our professionally trained team to discuss, plan and arrange the funeral service for your loved one. We will provide advice on registering the death and liaise with HM Coroner (Procurator Fiscal in Scotland), as required; assistance with the completion of necessary statutory documentation; collection and delivery of documents to the relevant authorities; and making all necessary arrangements for the funeral service. We'll organise the crematorium, cemetery or church and reception venues as appropriate, as well as liaising with your chosen minister or celebrant. Our Funeral Director and branch team are available to provide help and guidance to personalise the funeral arrangements for your family, friends and any third parties associated with delivering the funeral service, before and after the day of the funeral.

Professional care of the deceased and bringing them into our care

We are committed to providing the highest standard of professional care of the deceased at all times. When bringing your loved one into our care, we provide our professional, trained team and the provision of a private ambulance or other suitable vehicle, complete with all the necessary equipment and supplies, to bring the deceased into our care (within 50 miles). Our team will tend to the preparation and professional care of the deceased, including dressing them in a suitable white gown. You will also have use of our chapel of rest for visiting your loved one, if required.

Ceremonial vehicle and team for the day of the funeral

A Funeral Director will be in attendance on the day of the funeral to make sure everything runs smoothly. They will lead the procession and direct mourners as required. We will provide of a motor hearse which will be accompanied by trained pall bearers in the appropriate livery to attend the funeral as required.

	Simple Limited Choice	Traditional Flexible Choice	Classic Flexible Choice
Use of a Private Chapel of Rest by appointment	✓ Visiting in normal working hours	✓ Visiting at Anytime	✓ Visiting at Anytime
Hearse & team	✓	✓	✓
Choice of coffin (fully lined and fitted)		✓ Choice of a Wood Effect coffin	✓ Choice of a Solid wood coffin
Choice of date and time of funeral	Our choice of dates and times	✓	✓
Flexible funeral cortège (the traditional funeral procession)	Available at an additional cost	✓	✓
Funeral stationery - Order of Service	Limited range available at an additional cost	Available at an additional cost	Choice of 4 page design (50 copies)
Total (excluding limousine(s) and embalming)	£1,895	£2,790	£3,590
Embalming	Available at an additional cost	✓	✓
Limousine	Available at an additional cost	✓ 1 limousine	✓ 2 limousines
Floral Tributes	Limited range available at additional cost	Available at an additional cost	Available at an additional cost
Total (including limousine(s) and embalming)		£3,130	£3,930

Please Note: All prices shown are excluding third party fees incurred or paid on your behalf. Additional products and services will be charged according to the price listed. We will confirm all costs and provide a full funeral estimate. Traditional & Classic packages offer more flexible choices that can be tailored to suit your needs.

✓ Included in the Funeral Choice

Simple Funeral Package from £1,895

- Visiting the deceased in normal working hours in the Private Chapel of Rest.
- Provision of team and hearse direct to crematorium, burial ground or cemetery.
- Simple coffin fully lined and fitted with a white interior.
- Use of the funeral home for service where available.
- Team and wheeled bier will be provided; alternatively family members and friends can bear the coffin.

You can choose to add additional products and services which will be charged individually:

- Embalming of the deceased
- Floral tributes - limited range available
- Funeral stationery - limited range available
- Obituary notices, acknowledgements
- Fingerprint keepsakes
- Cremation commemoration range of caskets, urns and keepsakes
- Memorial masonry



The Simple Additional Service:

- Provision for the funeral service, church service or any other ceremony to take place at a separate location before attending the local cemetery or crematorium.
- Provision of a limousine
- Option for the hearse and (if chosen) the limousine(s) to attend the family home or other chosen location prior to the funeral and proceed to the funeral "in cortège".

The Simple Additional Service can be added on additionally as an entire option, or the limousine can be removed and the price reduced. Additional limousines can be added at our standard charge to the Simple Additional Service choice.

The Simple coffin

Wood effect coffin featuring flat lid and sides.

The Simple funeral has some restrictions which include:

- No alternative coffin choice available.
- No choice of the day and time of funeral - certain days and times may be excluded.
- No weekend and Bank Holiday funeral services.

Traditional Funeral Package from £3,130

- Embalming of the deceased.
- Choice of a Veneered Coffin; Aranmore, Devenish, Rathlin or Innisfree coffin. Fully lined and fitted.
- Hearse and team to conduct the funeral. Client choice of route for the funeral procession.
- One limousine.
- Flexible choice of time and date of funeral service to suit
- Flexible choice of time and date of funeral service to suit you. (Weekends and Bank Holidays incur an additional cost).

Should you wish to remove embalming or the limousine from the Traditional Funeral you can and the price will be amended accordingly.



Aranmore

Teak-effect foil veneer coffin with a gloss finish.



Devenish

African obeche wood veneer coffin with a matt finish.



Innisfree

African obeche wood veneer coffin with a gloss finish.



Rathlin

African obeche wood veneer coffin with a satin finish.

You can choose to add additional products and services which will be charged individually:

- Select an alternative coffin
- Floral tributes
- Funeral stationery, memorial books
- Obituary notices, acknowledgements
- Fingerprint keepsakes
- Cremation commemoration range of caskets, urns and keepsakes
- Memorial masonry
- Add an additional limousine or an alternative hearse

Classic Funeral Package from £3,930

- Embalming of the deceased.
- Choice of a Solid Wood Coffin; Lagan, Bann, Derg coffin. Fully lined and fitted.
- Hearse and team to conduct the funeral. Client choice of route for the funeral procession.
- Two Limousines.
- Order of Service. Choice of a 4 page design, quantity of 50.
- Memorial cards. Choice of a design, quantity of 50.
- Floral Tributes. Choice of funeral flowers, list price of £150.
- Flexible choice of time and date of funeral service to suit you. (Weekends and Bank Holidays incur an additional cost).

Should you wish to remove embalming or the limousines the price will be amended accordingly. You can also choose to change or remove the order of service, memorial cards and floral tribute from the Classic funeral and we will amend the costs and outline these on the funeral estimate.

You can choose to add additional products and services which will be charged individually:

- Select an alternative coffin
- Alternative hearse
- Funeral stationery, memorial books
- Obituary notices, acknowledgements
- Fingerprint keepsakes
- Cremation commemoration range of caskets, urns and keepsakes
- Memorial masonry



Lagan
South American kiri wood coffin with a gloss finish.



Bann
European pine coffin with a satin finish.



Derg
African ayous wood with a matt finish.

Additional Services

We have a range of product and services to create a more traditional or personal funeral for your loved one.

Funeral stationery and orders of service, keepsakes, floral tributes, Ashes into Glass, ashes urns and caskets, memorial books, floral tributes, orders of service, online funeral notice, donation and newspaper obituaries.

Our professional team will be able to discuss your requirements and help you to create the funeral you require. We'll then be able to confirm any additional costs and provide an estimate for the entire funeral.



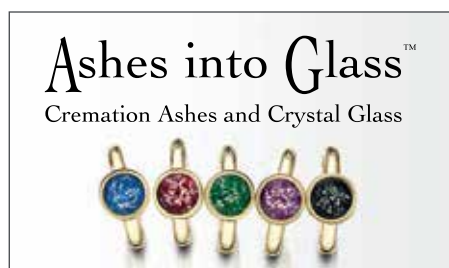
Funeral Stationery



Memories - Heart Shaped Keepsake



Floral Tributes - Rose Coffin Spray



Ashes into Glass



Memories - Anoka Urn



Memorial Books



Alternative Coffins & Additional Services

We offer a selection of traditional veneer and solid wood coffins in a range of finishes, as well as natural, eco-friendly and personalised coffins and caskets. Our experienced team will be happy to talk through your needs so you can choose the coffin or casket that is right for your loved one.

Alternative Coffin Choices at additional or reduced price for Traditional and Classic Funeral Choices:

	Traditional	Classic
The Simple Coffin	-£150	-£650
Aranmore		-£500
Devenish		-£500
Rathlin		-£500
Innisfree		-£500
Lagan	£500	
Bann	£500	
Derg	£500	
Finn	£930	£430
Shannon	£1,040	£540
Braid	£1,240	£740
Liffey	£1,290	£790
Strule	£1,680	£1,180
Solid Wood	£490	-£10
Willow	£620	£120
Cardboard coffin	£100	-£400
Picture coffin various	£735	£235

Additional Services (where available)

Simple Funeral additional service option- includes flexible funeral procession route and a chauffeur-driven limousine		£495
Provision of a Limousine	£220	Reception into church/ home (outside normal working hours) £170
Embalming	£120	Order of Service (4 page 50 pieces colour outer and B&W interior) in Classic Choice £80
Floral Tributes	Prices vary	Temporary Grave Marker (rental) inc VAT £60
Floral Hearse	£415	Remembrance caskets, urns, memorial masonry Prices vary
Horse Drawn/ Motorcycle/ Other Specialist Hearse	Prices vary	Funeral team attending interment of ashes £50
Additional time on funerals - cost per half hour per vehicle (funerals taking over 3 hours)	£25	Funeral team with limousine attending interment of ashes £220
Additional mileage for funeral vehicle - cost per mile (funerals beyond 20 miles)	£1.70	Additional mileage for bringing the deceased into our care - cost per mile (one way only beyond 50 miles) £1.70
Saturday/ Sunday/ Bank Holiday funerals - a supplementary charge is payable for funerals conducted on a Saturday, Sunday or Bank Holiday		Saturday £200
		Sunday/ Bank Holiday £240

Children's Funerals

Our services are provided free of charge for children under 18 years of age. This includes the provision of a coffin, our professional and supplementary services (including a hearse or other suitable funeral vehicle and limousine).



Payment Information

Payment of Funeral Account

Please Note: Payment is due within 28 days of the date of invoice. If the account remains unpaid after this date, we reserve the right to charge a fee in order to cover our administration costs for the recovery of any debt. Interest may also be charged to your account on any remaining balance.

There is no need to wait for probate. If sufficient funds are available, settlement can usually be made directly from the deceased's bank account without having to wait for probate to be completed. Please inform us if you intend to claim assistance for funeral expenses from the Social Fund (DWP). These payments are a contribution towards costs and will not cover the entire cost of the funeral so there will be a balance to be paid by you. The rules for eligibility are complex and we suggest that you speak with your Funeral Arranger or your local Department for Work and Pensions (DWP) office for advice. In the event of an unsuccessful claim, payment of the full amount of the funeral account will be your responsibility. We accept payment by most major Debit or Credit Cards*, Online Bank Transfer, BACS, Cash or Cheque. Please ask your Funeral Arranger for details.

*excluding American Express and Diners Club International.

We are here for you 24 hours a day 365 days a year

